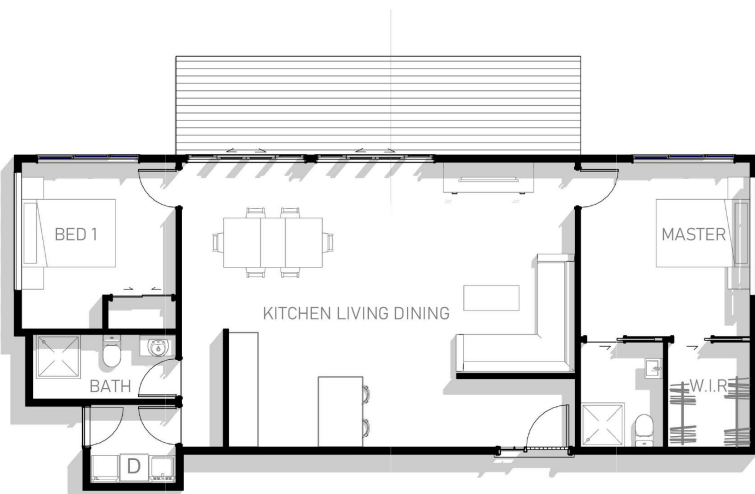




URBAN LIVING

- 90

A simple yet elegant layout of 2 bedrooms and central living space these 90 square meter home focuses on entertaining and social spaces, each bedroom is situated on either side of the plan with the living in the centre flowing to the outdoors. This design is finished in a modern rustic look featuring board and batten cladding with schist accents.



 x2
  x2
  x1
  x1

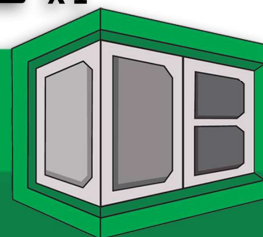
New Zealand
Certified
Builders
Association

NZ
CB

LICENSED BUILDING PRACTITIONER
BUILDING CONFIDENCE



www.daydesignandbuild.com
 Nick Day PH : 02040041288
nick@daydesignandbuild.com
 Franklin District, Auckland



DAY DESIGN & BUILD